



GAT MONTHLY MEMBERSHIP PROGRESS REPORT

Results as of: 1/31/2022

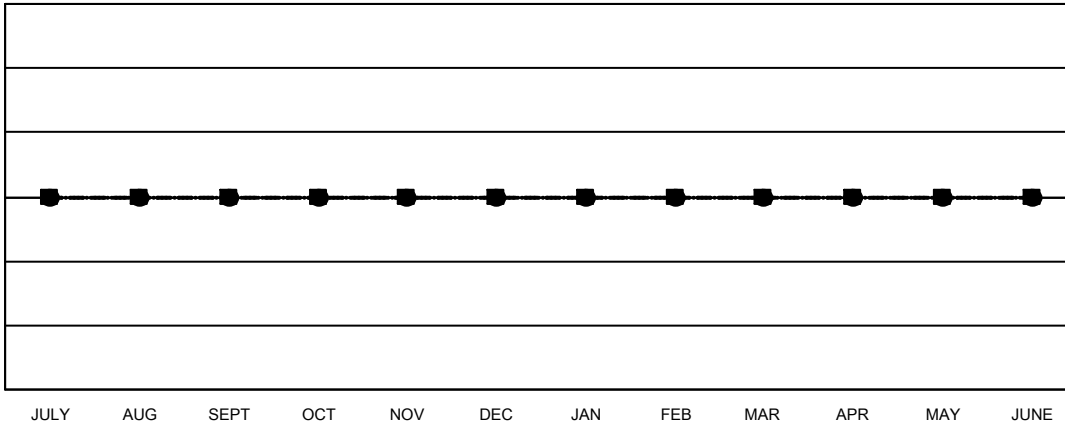
Multiple District 44

LOCATION: NEW HAMPSHIRE

| Clubs | | | |
|-----------------------|---------------|-----------|---------------|
| RESULTS FOR 2021-2022 | | | |
| QUARTER | NEW CLUB GOAL | NEW CLUBS | DROPPED CLUBS |
| JULY/AUG/SEPT | 0 | 0 | 2 |
| OCT/NOV/DEC | 0 | 0 | 0 |
| JAN/FEB/MAR | 0 | 0 | 0 |
| APR/MAY/JUNE | 0 | 0 | 0 |

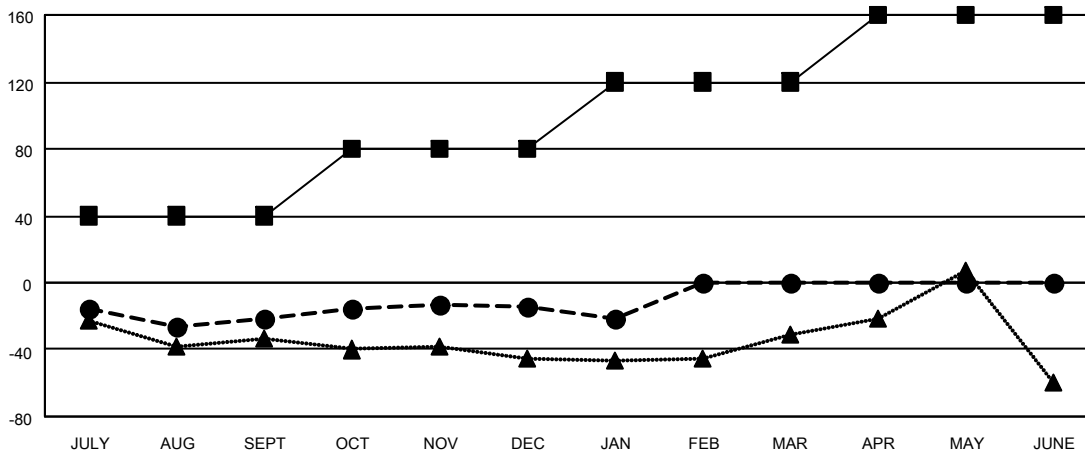
| Members | | | |
|-----------------------|------------------------|----------------------|--|
| RESULTS FOR 2021-2022 | | | |
| QUARTER | MEMBER GROWTH NET GOAL | MEMBER GROWTH ACTUAL | DROPPED MEMBERS ACTUAL (including transfers) |
| JULY/AUG/SEPT | 40 | 39 | 60 |
| OCT/NOV/DEC | 40 | 66 | 58 |
| JAN/FEB/MAR | 40 | 26 | 27 |
| APR/MAY/JUNE | 40 | 0 | 0 |

GOALS AND ACTUAL NEW CLUBS CUMULATIVE



- CURRENT YEAR GOALS FOR NEW CLUBS
- CURRENT YEAR ACTUAL NEW CLUBS
- ▲- LAST YEAR ACTUAL NEW CLUBS

GOALS AND ACTUAL MEMBERS CUMULATIVE



- MEMBER GROWTH NET GOAL
- MEMBER GROWTH ACTUAL
- ▲- LAST YEAR MEMBERSHIP ACTUAL

| | | |
|------------------------|---|--------------------------------------|
| DROPPED CLUBS: 2 | 44 CLUBS OF 81 ADDED 1 OR MORE NEW MEMBERS | GENDER DISTRIBUTION |
| DROPPED MEMBERS | CLICK HERE FOR CUMULATIVE MEMBERSHIP DATA | MALE 1,238 (55.84%) |
| DECEASED 18 | | FEMALE 979 (44.16%) |
| CLUB CANCELLED 9 | | NON BINARY 0 (0.00%) |
| OTHER 118 | | PREFER NOT TO ANSWER 0 (0.00%) |
| TOTAL 145 | | TOTAL FAMILY UNIT MEMBERS 717 |
| | | FAMILY MEMBERS PAYING HALF DUES 368 |